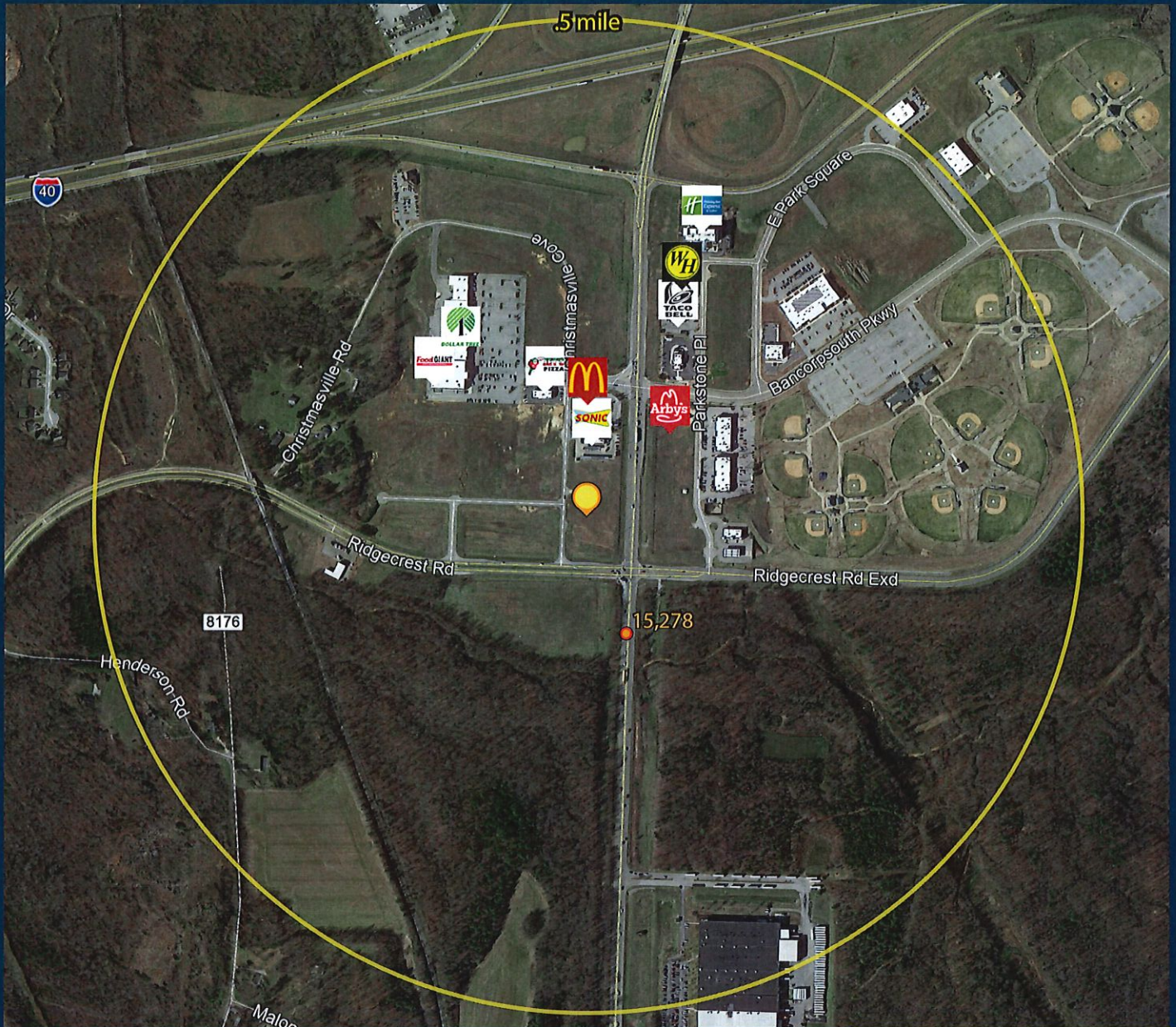


# 84 Chloe, Jackson, TN 38305



## DETAILS

DEMOGRAPHICS	1 mile	3 mile	5 mile
Average Household Income	\$55,257	\$63,755	\$59,140
Population	946	18,549	57,017
Median Age	35	36	36
Occupied Units Owner	256	5,150	13,549

## CONTACT INFORMATION

Eden Smith  
 c. 731.225.8004  
 o.731.668.1777  
 eden@edensmith.com

**COLDWELL BANKER  
 REAL ESTATE NOW**  
 Each office Independently  
 owned and operated



ADT=20,000+

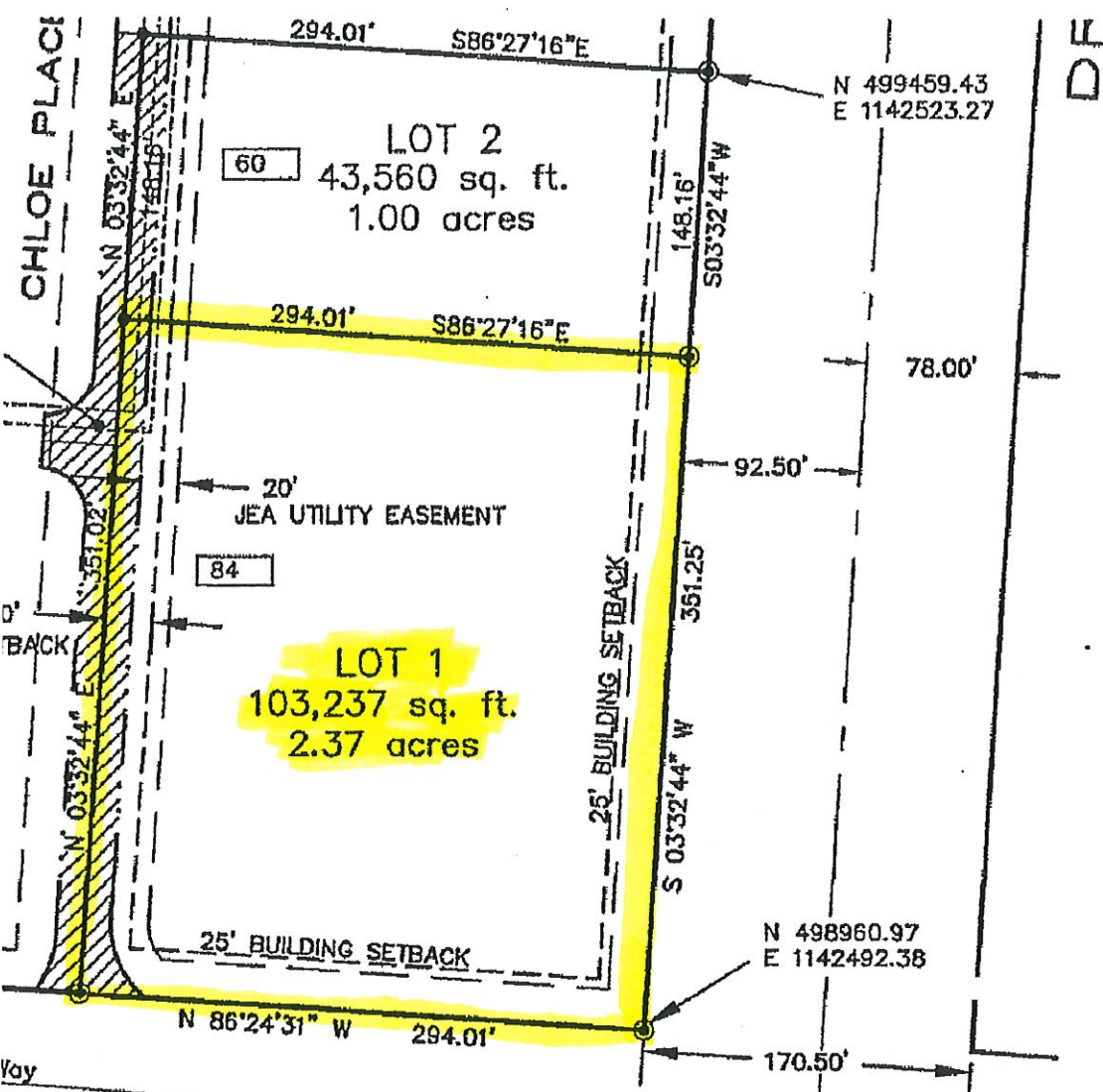
Multi tenant retail center



84 Chloe Pl



8176



# COMPLETE PROFILE

2000-2010 Census, 2019 Estimates with 2024 Projections

Lat/Lon: 35.6723/-88.782

RFULL9

## 84 Chloe Pl

Jackson, TN 38305

1 mi radius

3 mi radius

5 mi radius

### Population

Estimated Population (2019)	477	17,610	61,348
Projected Population (2024)	474	17,666	62,305
Census Population (2010)	502	18,049	62,807
Census Population (2000)	439	15,037	59,695
Projected Annual Growth (2019-2024)	-3 -0.1%	56 -	957 0.3%
Historical Annual Growth (2010-2019)	-25 -0.6%	-439 -0.3%	-1,459 -0.3%
Historical Annual Growth (2000-2010)	63 1.4%	3,012 2.0%	3,112 0.5%
Estimated Population Density (2019)	152 <i>psm</i>	623 <i>psm</i>	781 <i>psm</i>
Trade Area Size	3.1 <i>sq mi</i>	28.3 <i>sq mi</i>	78.5 <i>sq mi</i>

### Households

Estimated Households (2019)	186	7,370	25,578
Projected Households (2024)	187	7,485	26,339
Census Households (2010)	182	7,006	24,311
Census Households (2000)	163	5,774	23,367
Projected Annual Growth (2019-2024)	1 0.1%	114 0.3%	761 0.6%
Historical Annual Change (2000-2019)	23 0.7%	1,596 1.5%	2,210 0.5%

### Average Household Income

Estimated Average Household Income (2019)	\$57,498	\$62,910	\$58,523
Projected Average Household Income (2024)	\$67,111	\$73,683	\$67,553
Census Average Household Income (2010)	\$46,998	\$51,053	\$48,957
Census Average Household Income (2000)	\$51,586	\$49,620	\$47,004
Projected Annual Change (2019-2024)	\$9,612 3.3%	\$10,774 3.4%	\$9,030 3.1%
Historical Annual Change (2000-2019)	\$5,912 0.6%	\$13,289 1.4%	\$11,519 1.3%

### Median Household Income

Estimated Median Household Income (2019)	\$52,758	\$53,094	\$47,290
Projected Median Household Income (2024)	\$61,820	\$60,755	\$54,128
Census Median Household Income (2010)	\$38,128	\$40,846	\$36,452
Census Median Household Income (2000)	\$50,212	\$42,169	\$35,735
Projected Annual Change (2019-2024)	\$9,062 3.4%	\$7,661 2.9%	\$6,838 2.9%
Historical Annual Change (2000-2019)	\$2,546 0.3%	\$10,925 1.4%	\$11,556 1.7%

### Per Capita Income

Estimated Per Capita Income (2019)	\$22,476	\$26,374	\$24,808
Projected Per Capita Income (2024)	\$26,576	\$31,263	\$28,959
Census Per Capita Income (2010)	\$17,079	\$19,818	\$18,950
Census Per Capita Income (2000)	\$19,953	\$19,170	\$18,284
Projected Annual Change (2019-2024)	\$4,100 3.6%	\$4,889 3.7%	\$4,151 3.3%
Historical Annual Change (2000-2019)	\$2,522 0.7%	\$7,204 2.0%	\$6,524 1.9%
Estimated Average Household Net Worth (2019)	\$221,225	\$334,859	\$318,004

This report was produced using data from private and government sources deemed to be reliable. The information herein is provided without representation or warranty.

